



# GAL4 Activation Domain Polyclonal Antibody

Catalog No	YP-Ab-01209
Isotype	IgG
Reactivity	0
Applications	WB
Gene Name	
Protein Name	
Immunogen	Recombinant Protein of GAL4 Activation Domain
Specificity	The antibody detects endogenous GAL4 Activation Domain protein.
Formulation	PBS, pH 7.4, containing 0.5%BSA, 0.02% sodium azide as Preservative and 50% Glycerol.
Source	Polyclonal, Rabbit,IgG
Purification	The antibody was affinity-purified from rabbit antiserum by affinity-chromatography using epitope-specific immunogen.
Dilution	WB: 1:10000-50000
Concentration	1 mg/ml
Purity	≥90%
Storage Stability	-20°C/1 year
Synonyms	YM3410
Observed Band	
Cell Pathway	
Tissue Specificity	
Function	
Background	The GAL4 protein of <i>Saccharomyces cerevisiae</i> is one of the most thoroughly characterized transcriptional activators. Since the N-terminal 147 amino acid residues of GAL4 are sufficient to mediate specific and strong binding to DNA, but are incapable of efficient transcriptional activation, this protein fragment has frequently been used to confer specific DNA binding in experiments examining transcriptional activation functions of heterologous proteins. This approach is facilitated by the finding that higher eukaryotes lack endogenous proteins that enhance transcription from the consensus GAL4-binding site. Fusions between GAL4 (aa 1-147) and activating domains from a variety of transcriptional regulatory proteins can activate transcription in yeast, plant, insects and mammalian cells. A unique "two-hybrid" system has been developed using GAL4 fusions in yeast to identify specific protein-protein interactions.

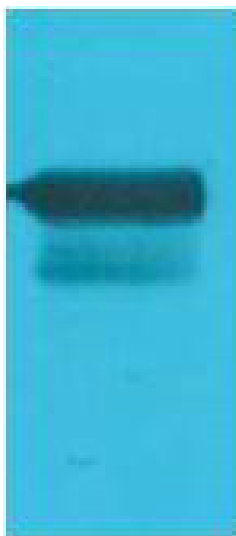
**matters needing attention**

Avoid repeated freezing and thawing!

**Usage suggestions**

This product can be used in immunological reaction related experiments. For more information, please consult technical personnel.

## Products Images



Western blot analysis of Recombinant AD protein using GAL4 Activation Domain Polyclonal Antibody. Secondary antibody(catalog#:RS0002) was diluted at 1:20000